

±6,235 SF AVAILABLE

# THE OLDE CRACKER FACTORY IN THE MARINA DISTRICT

448 WEST MARKET STREET :: DOWNTOWN SAN DIEGO, CA 92101



## FEATURES

- Ground Floor Retail/Restaurant Space Available
- Marina District is an affluent urban community located in Downtown San Diego
- Over 1,700 residents within a 300 foot radius
- Visible from Downtown Grand Hyatt Towers
- Walking Distance from Convention Center, Seaport Village, and many hotels

## FOR MORE INFORMATION PLEASE CONTACT:

**Jim Rinehart**

Lic. 1824068

P 858.546.4626

[jim.rinehart@cbre.com](mailto:jim.rinehart@cbre.com)

[www.cbre.com/jim.rinehart](http://www.cbre.com/jim.rinehart)

**CBRE**

±6,235 SF AVAILABLE

# THE OLDE CRACKER FACTORY IN THE MARINA DISTRICT

448 WEST MARKET STREET :: DOWNTOWN SAN DIEGO, CA 92101



## FEATURES

- Historical Building with recent \$7 million renovation
- Building includes 11 Live/Work Lofts above

**FOR MORE INFORMATION PLEASE CONTACT:**

**Jim Rinehart**

Lic. 1824068

P 858.546.4626

[jim.rinehart@cbre.com](mailto:jim.rinehart@cbre.com)

[www.cbre.com/jim.rinehart](http://www.cbre.com/jim.rinehart)

**CBRE**

±6,235 SF AVAILABLE

# THE OLDE CRACKER FACTORY IN THE MARINA DISTRICT

448 WEST MARKET STREET :: DOWNTOWN SAN DIEGO, CA 92101



CBRE, Inc. | 4365 Executive Drive | Suite 1600 | San Diego, CA 92121 | [www.cbre.com/sdcentral](http://www.cbre.com/sdcentral)

© 2012 CBRE, Inc. The information contained in this document has been obtained from sources believed reliable. While CBRE, Inc. does not doubt its accuracy, CBRE, Inc. has not verified it and makes no guarantee, warranty or representation about it. It is your responsibility to independently confirm its accuracy and completeness. Any projections, opinions, assumptions or estimates used are for example only and do not represent the current or future performance of the property. The value of this transaction to you depends on tax and other factors which should be evaluated by your tax, financial and legal advisors. You and your advisors should conduct a careful, independent investigation of the property to determine to your satisfaction the suitability of the property for your needs. Photos herein are the property of their respective owners and use of these images without the express written consent of the owner is prohibited.

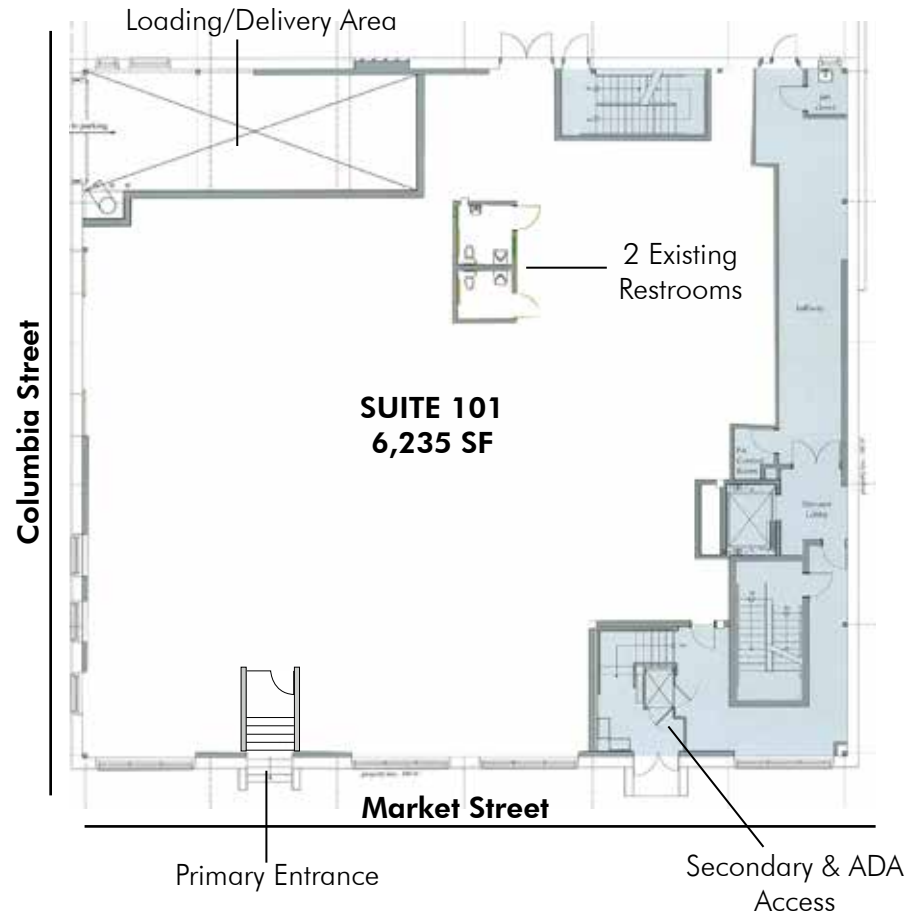


±6,235 SF AVAILABLE

# THE OLDE CRACKER FACTORY IN THE MARINA DISTRICT

448 WEST MARKET STREET :: DOWNTOWN SAN DIEGO, CA 92101

## EXISTING FIRST FLOOR PLAN



FOR MORE INFORMATION PLEASE CONTACT:

**Jim Rinehart**

Lic. 1824068

P 858.546.4626

[jim.rinehart@cbre.com](mailto:jim.rinehart@cbre.com)

[www.cbre.com/jim.rinehart](http://www.cbre.com/jim.rinehart)

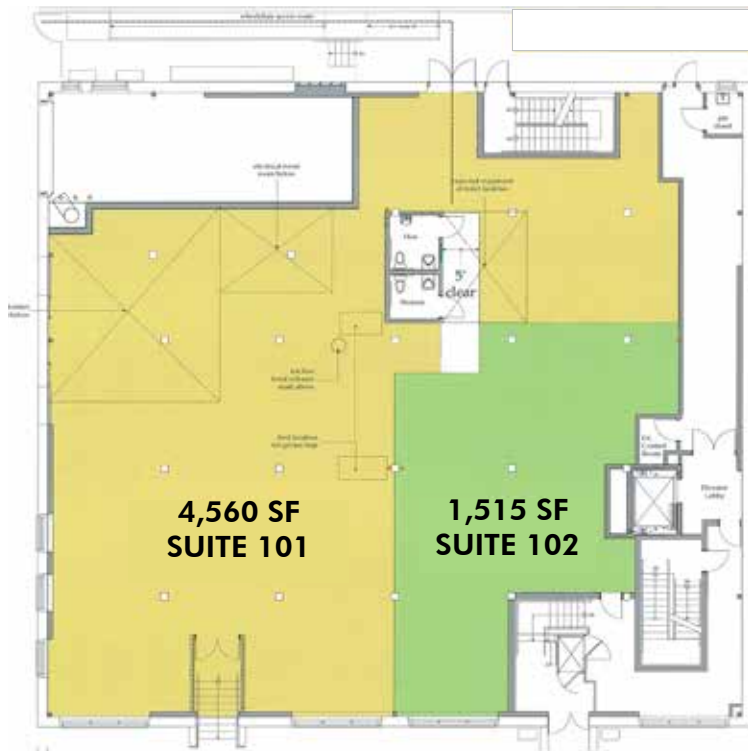
**CBRE**

±6,235 SF AVAILABLE

# THE OLDE CRACKER FACTORY IN THE MARINA DISTRICT

448 WEST MARKET STREET :: DOWNTOWN SAN DIEGO, CA 92101

## POSSIBLE DEMISING PLAN



FOR MORE INFORMATION PLEASE CONTACT:

**Jim Rinehart**

Lic. 1824068

P 858.546.4626

[jim.rinehart@cbre.com](mailto:jim.rinehart@cbre.com)

[www.cbre.com/jim.rinehart](http://www.cbre.com/jim.rinehart)

**CBRE**

# THE OLDE CRACKER FACTORY IN THE MARINA DISTRICT

448 WEST MARKET STREET :: DOWNTOWN SAN DIEGO, CA 92101

## DEMOGRAPHICS

	448 Market St 1 mile radius	448 Market St 3 mile radius	448 Market St 5 mile radius	
POPULATION	2012 Estimated Population	37,262	171,234	449,022
	2017 Projected Population	42,780	176,987	457,952
	2000 Census Population	21,542	158,599	429,302
	1990 Census Population	19,443	155,855	415,698
	Growth 2000-2012	72.97%	7.97%	4.59%
	Growth 2012-2017	14.81%	3.36%	1.99%
	2012 Estimated Median Age	44.01	36.36	34.01
2012 Estimated Average Age	44.34	37.80	35.63	
HOUSEHOLDS	2012 Estimated Households	19,862	70,591	169,520
	2017 Projected Households	23,032	74,562	175,166
	2000 Census Households	10,175	59,974	156,073
	1990 Census Households	7,491	55,162	146,759
	Growth 2000-2012	95.20%	17.70%	8.62%
	Growth 2012-2017	15.96%	5.63%	3.33%
	2012 Est. Average Household Size	1.56	2.06	2.43
INCOME	2012 Est. Median Household Income	\$31,822	\$40,967	\$40,146
	2017 Prj. Median Household Income	\$33,946	\$42,295	\$41,350
	2000 Cen. Median Household Income	\$22,099	\$33,247	\$32,465
	1990 Cen. Median Household Income	\$13,054	\$23,863	\$24,337
	2012 Est. Average Household Income	\$55,481	\$61,740	\$57,760
2012 Estimated Per Capita Income	\$31,650	\$27,717	\$23,332	
HOUSING	2012 Estimated Housing Units	24,371	80,314	186,065
	2012 Estimated Occupied Units	19,862	70,591	169,520
	2012 Estimated Vacant Units	4,509	9,724	16,545
	2012 Est. Owner Occupied Units	4,578	21,596	54,961
	2012 Est. Renter Occupied Units	15,284	48,995	114,559
	2012 Est. Median Housing Value	\$421,462	\$404,936	\$309,725
	2012 Est. Average Housing Value	\$467,566	\$479,596	\$388,921

FOR MORE INFORMATION PLEASE CONTACT:

**Jim Rinehart**

Lic. 1824068

P 858.546.4626

jim.rinehart@cbre.com

www.cbre.com/jim.rinehart